

Internet Exploreri seadistamine DELTA-ga töötamiseks

PROBLEEM

Sisenemine Delta keskkonda käib JASIG lehel

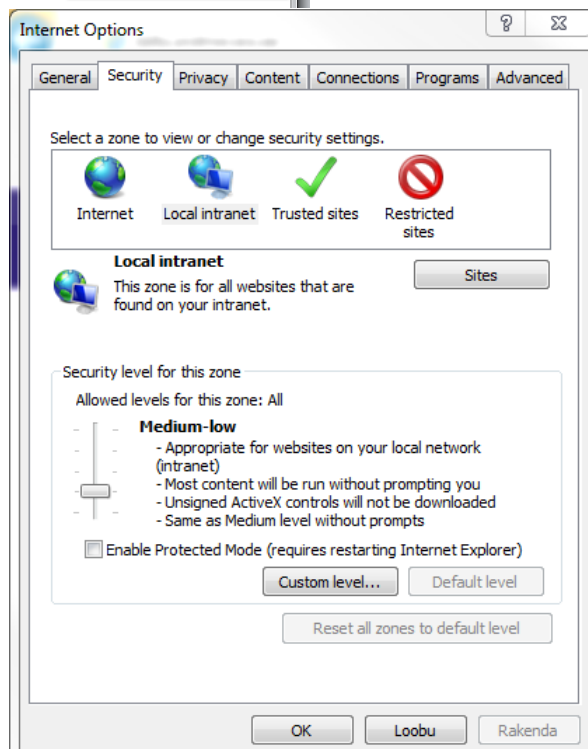
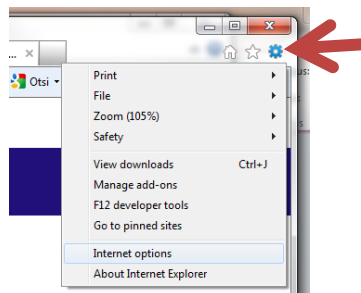
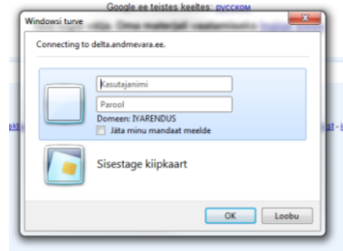
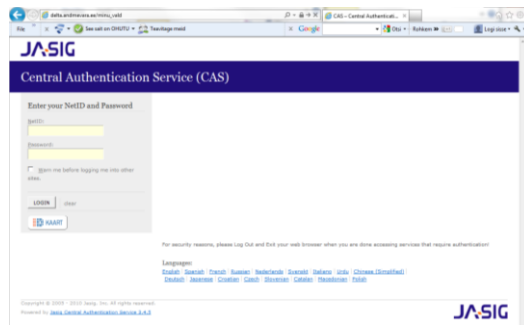
Kui Internet Explorer on seadistamata, avaneb Windows Login aken, mis tuleb sulgeda. Igakordne sulgemine on tülikas ja tekitab segadust.

LAHENDUS

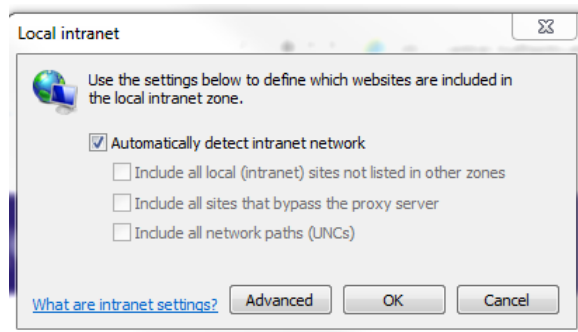
Lisage majutusteenuse serveri aadress kohaliku intraneti piirkonda (Locale intranet zone).

Detailne juhend

1. Ava Internet Exploreri seaded (Tools -> Internet Options)
2. Vali „Security“ kaardilt „Local intranet“ ja vajuta nuppu „Sites“



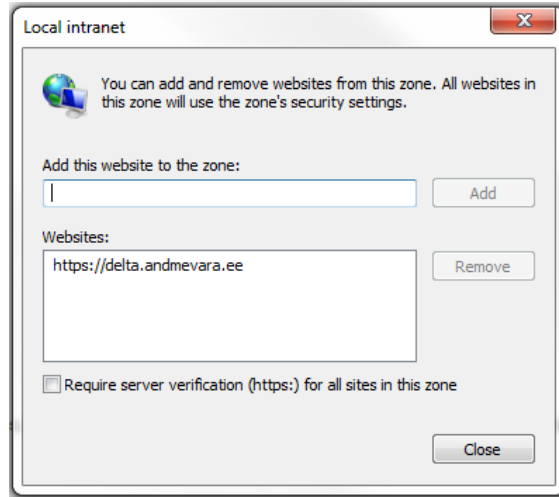
3. Vajuta nupule „Advanced“



4. Vajadusel kirjuta reale „Add this website to the zone:“
https://delta.andmevara.ee

Vajuta nupule „Add“, aadress peab ilmuma alumisse alasse.

Sulge aken nupu „Close“ vajutusega



5. Sulge kõik valikuaknad ja Internet Explorer. Järgmisel sisenemisel enam tülikat Windowsi login akent ei avata.